



Shoalhaven Heads 1520 Bolong Road

By Negotiation

FARM, DEVELOP OR HOLD?

EXPRESSIONS OF INTEREST

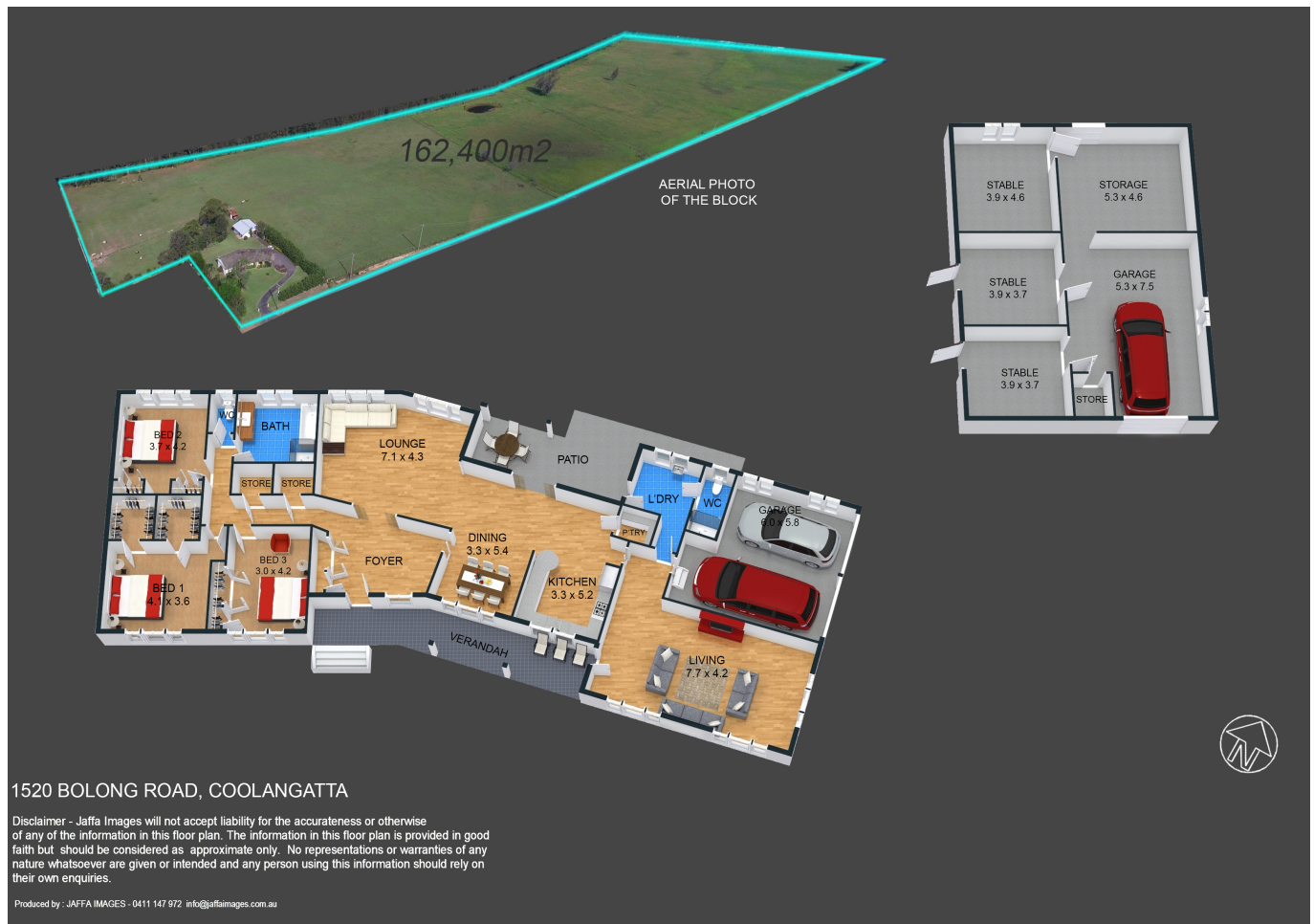
This prime 40.6 acre land holding has long been the gateway to Shoalhaven Heads and it is now up for grabs. Further develop and take full advantage of the site with potential for future re-zoning.

- Spacious three bedroom home, stunning rural outlook.
- Master bedroom is enormous with dual walk-in robes.
- Bedroomss two and three are generous with built-ins.
- Multiple living spaces plus large east facing sunroom.
- Outbuildings include stables, garages and storage room.
- Multiple fenced and maintained paddocks, 99% cleared.
- Re-zoning for future development may be a possibility.
- Over 1km of prime street frontage, great corner location.
- Opposite large caravan park/over 50's residential living.

All enquiries please contact Peter Robinson on 0431 454 312 or Scott Morton on 0405 227 987.



Scott Morton
0405 227 987
0244 417 514
scott@jervisbayproperties.com.au



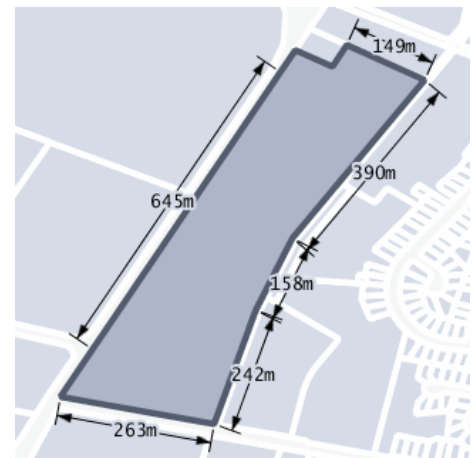
Vital Statistics

EER

Feature List

- 40.6 acre Land Holding has Long Been the Gateway to Shoalhaven Heads.
- Spacious Three Bedroom Home Complete with Stunning Rural Outlook.
- Re-zoning for Future Development may be Possible Given the Position.
- Directly Opposite a Large Caravan Park/Over 50's Residential Living.

Block Map



Disclaimer

This report has been compiled by All Homes Pty Ltd (ACN 093 012 652). Information within this report is supplied in large part by third parties. While All Homes attempts to publish information in good faith: All Homes and information providers provide no guarantees, undertakings or warranties regarding the correctness, comprehensiveness or up-to-dateness of information, or its fitness for any user pays purpose; Users are advised to corroborate information at their discretion; Circumstances changed post-publication can alter information accuracy, and All Homes does not assure the information accuracy or guidance therein contained. Access to this report is subject to All Homes Terms & Conditions which can be viewed at <http://www.allhomes.com.au/ah/ah0011>